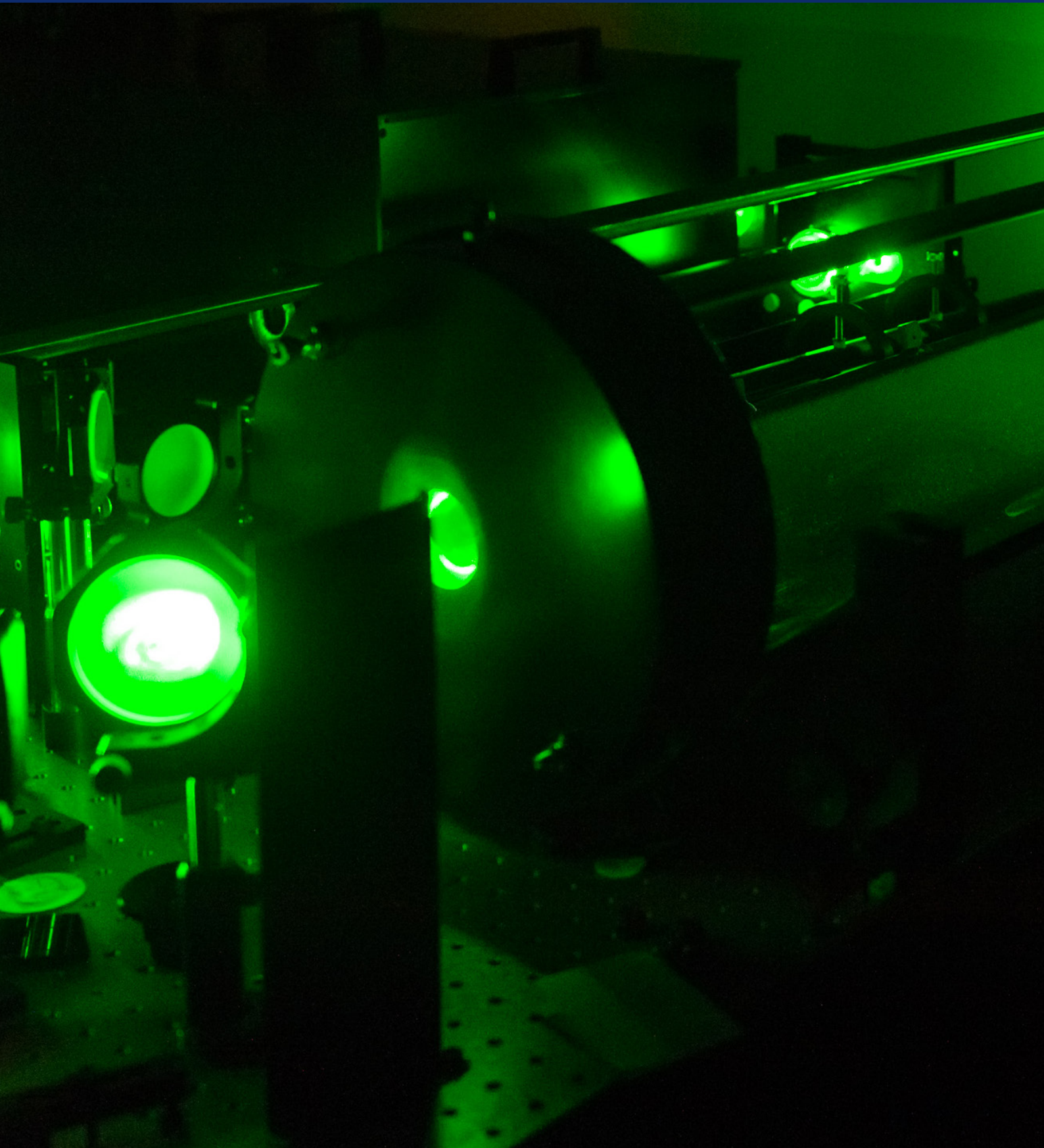


DIODE PUMPED SOLID STATE LASER

The logo for TEOS, featuring a stylized starburst or asterisk symbol to the left of the letters 'TEOS' in a bold, italicized, sans-serif font.



DIODE PUMPED SOLID STATE LASER



Available as 532nm or 1064nm, the kW class high average power diode pumped solid state laser is used for space objects tracking.

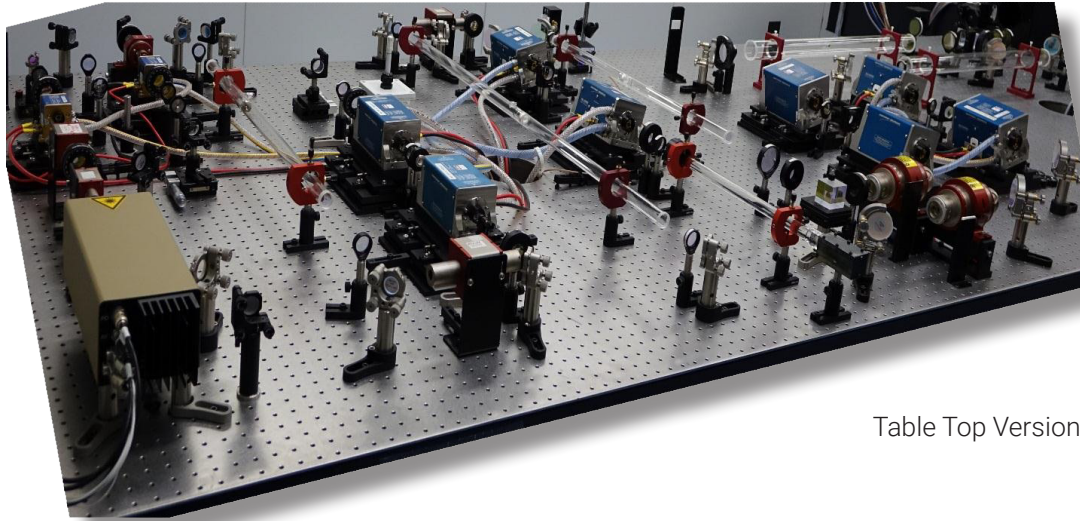
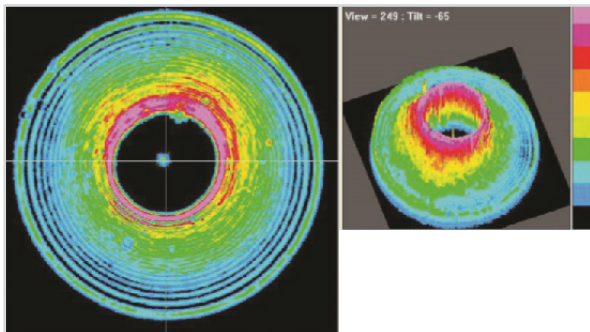
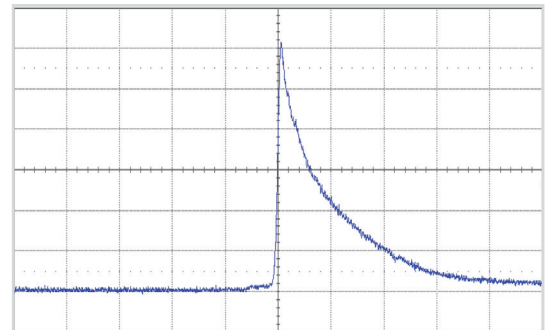


Table Top Version



Donut Laser Beam Profile



(FWHM) Pulse Width

FEATURES

- Diode pumped laser system capable of generating multi-joule pulse energy with nano-second (ns) pulse width while maintaining good beam quality at high average power level
- Modular version offers flexibility, easy transportation, field deployment and different modules offer different energy and average power output
- High level automation, reliability and extremely low level of maintenance
- When required the output beam can be transformed to donut mode for escaping the central obscuration of the telescope

SPECIFICATIONS

Wavelength (nm)	532 or 1064
Pulse repetition rate (Hz)	100-200
Output energy (mJ)	100 - 5000
Energy Stability	± 2.5%
Pulse width (ns)	5 - 20
Divergence (mR)	≤ 0.75 (full angle)
Beam quality (M ²)	≤ 3.5
Beam pointing stability (mR)	≤ 0.25

For more information please contact:
EOS Space Technologies USA
2868 Wall Triana Hwy SW
Huntsville, AL 35824

COMPANY WITH
QUALITY SYSTEM
CERTIFIED BY DNV GL
= ISO 9001 =

eosdsusa.com
Email: space@eosdsusa.com